



**CICF**

Central Indiana  
Community  
Foundation

# Annual Report

2025



# A Message from Our Leaders

This is a defining era for Central Indiana. Across our region, communities are navigating growing needs, reduced resources, and rapidly evolving systems. Our responsibility as leaders at CICF is to guide through this moment and position ourselves to take advantage of the opportunities that always arise in times like these. The question is “How?”

From the Board’s perspective, our responsibility is clear. We must ensure CICF is positioned not only to respond to today’s disruptions, but also to preserve our impact for years to come. In 2025, that meant supporting CICF’s new strategic direction to reflect both urgency and possibility, while continuing to sharpen our focus and refine our priorities.

From an organizational standpoint, 2025 was a year of rebirth and renewal. It marked the launch of CICF’s new strategic plan (and not a moment too soon), designed to unlock the full potential of our region’s nonprofit ecosystem, deepen partnerships, and align our work to improve the outcomes that matter most to Central Indiana.

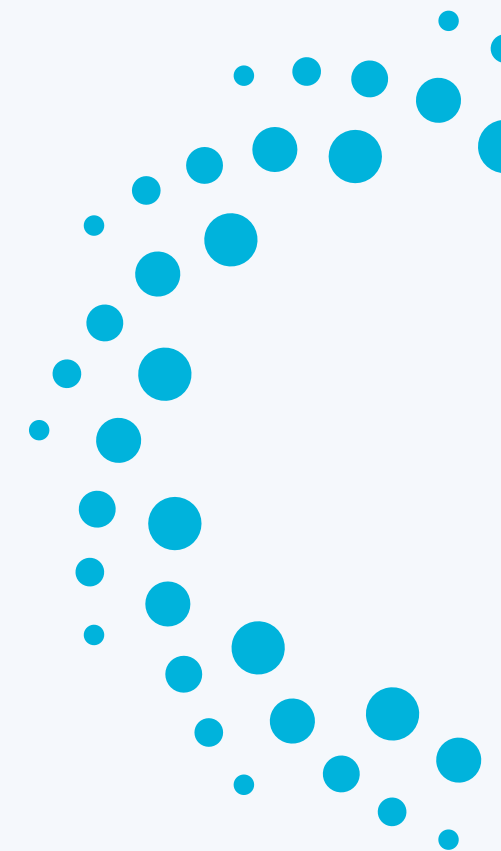
This annual report is both a reflection on our success during turbulent 2025 and a view into the future we are actively building. We are grateful for your partnership and belief in this work. Together, we will fuel a more prosperous, thriving Central Indiana for generations to come.



**JASMIN N. FRENCH**  
Board of Directors Chair



**JENNIFER BARTENBACH**  
Chief Executive Officer



# New Strategic Plan

CICF launched its first-ever strategic plan in 2025, which outlined our Pathways to a Stronger Central Indiana framework, which now guides everything we do. These four pathways shape our priorities, our partnerships, and the way we show up for the region.



Watch this video celebrating the potential of Central Indiana.



# New Strategic Plan, cont.



We bring people and organizations together across county lines so that Central Indiana can work as a connected, collaborative region, not just as separate communities.



We work with individuals, families, and companies to help them give with purpose and make a bigger difference through philanthropy.



We allow nonprofits to focus on doing what they do best, by doing what we do best. We help them build financial stability, operate more effectively, work together more efficiently, and navigate long-term challenges.



We support nonprofit professionals, our own team, and community leaders—because strong people build strong communities.



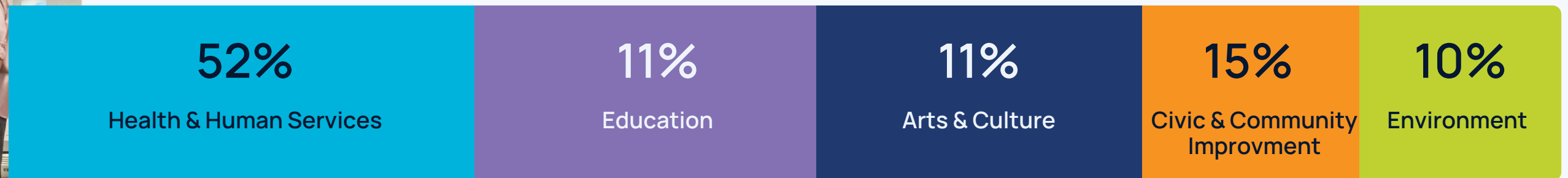
Fundholder Visit with Groundwork Indy

# CICF Individual Fundholders



Fundholder Visit with Neuro Hope

## Areas of Giving



CICF also provided philanthropic support for fundholders of our foundation partners, which includes Hamilton County Community Foundation, the Indianapolis Foundation and Women's Fund of Central Indiana.

# Responding to Urgent Needs

In 2025, CICF continued its commitment to bringing opportunities to fundholders who are passionate about responding when urgent needs arise.

For example, with SNAP benefits in flux, fundholders and CICF, along with its partners at Hamilton County Community Foundation, the Indianapolis Foundation, and Women's Fund of Central Indiana worked with individual fundholders and community partners to help raise and grant out more than \$1 million in six weeks to address food insecurity.



**\$1 M+**  
granted to  
recovery efforts  
from fundholders  
across our  
foundation  
partners



Staff Members Visit to Gleaners

# Supporting Our Fundholders

## GIVING LIBRARY

CICF launched and grew the CICF Giving Library, a resource linking donors to vetted charitable organizations in Central Indiana.

## FUNDHOLDER OFFERINGS

CICF added more opportunities for fundholders to get a firsthand look at the work their philanthropy enables, including bus tours, site visits, Values, Interests, and Purpose (VIP) sessions, succession planning meetings, and the youth philanthropy Seeds of Caring partnership.

## PROFESSIONAL ADVISOR NETWORK

CICF's Giving Strategies Team continued to engage with its professional advisor network, including through its annual Professional Advisor Seminar, which this year hosted Phyllis Silverstein, who is a wealth and fiduciary senior manager, executive director with Wells Fargo Bank Wealth & Investment Management division located in Atlanta, Georgia, and Pamela Jones Davidson, Founder & President of Davidson Gift Design in Bloomington.

[Learn About Collaborative Bus Tours](#)



Phyllis Silverstein at the Professional Advisor Seminar



Seeds of Caring Event

# Scholarship Highlights

Generous community members who hold funds with CICF have established scholarships to help make education more accessible for students in our community. CICF is honored to administer the scholarship application and award process, providing a streamlined experience for students.

CICF also provided philanthropic support for scholarship fundholders of our foundation partners, which includes Hamilton County Community Foundation, the Indianapolis Foundation, and Women's Fund of Central Indiana.



The CICF Scholarships Team presenting at a Burmese Community of North America event.



# Strategic Philanthropy Services

CICF provides personalized support to family foundations, working closely with families and their teams to advance their philanthropic goals.



In 2025, the Glick Fund at CICF, a charitable initiative of Glick Philanthropies, directed over 100 grants totaling \$5.7 million to our community's nonprofits. In addition to sustained support to fill critical gaps for community members, Glick Philanthropies stepped up to help meet the moment by increasing their overall grantmaking budget. For example, they deployed 15 grants totaling \$150,000 to community food banks when SNAP benefits were at risk and delayed.



In 2025, Herbert Simon Family Foundation awarded more than \$13 million in grants across its impact areas of arts and culture, basic needs, environment and climate, equity and justice, and Jewish causes. Within arts and culture, HSFF conducted second rounds for the Indianapolis Creative Risk Fund and Artists At Work, moving \$440,000 in funding direct to 14 Indianapolis based artists.



In 2025, the Efroymsen Family Fund supported 110+ unique non-profit organizations focused on the arts, environment, historic preservation and to assist individuals in need. This year the Efroymsen Family Fund surpassed \$150 million in charitable giving to organizations in Central Indiana and beyond.



CICF Board Chair Jasmin French,  
and CICF CEO Jennifer Bartenbach

# Philanthropy Advocacy

In March, CICF participated alongside other community foundations in the Community Foundation Awareness Initiative's trip to Washington D.C.

Leaders took part in more than 20 meetings with members of the House and Senate, with a focus on the Ways and Means and Finance Committees. The team explained the role of community foundations and advanced policy ideas that support charitable giving and donor-advised funds.

In November, CICF again worked with the Community Foundation Awareness Initiative, signing on with other community foundations to sponsor a letter advocating for the importance of CDFIs.

CICF FUND HIGHLIGHT

# Women's Fund

Women's Fund answers the call of community by investing in systems change, advocating for women's rights, and building collective power for women and girls.

For 30 years, Women's Fund has executed its mission by granting money to women- and girl-serving not-for-profits and programs doing impactful work in the eight-county Central Indiana community.



CICF FUND HIGHLIGHT

# Women's Fund, cont.

CICF worked with Women's Fund staff and board members to form Women's Foundation and file the IRS application for 501(c)(3) public charity status. Their application was accepted. CICF will continue to provide support through the transition to Women's Foundation and beyond to ensure it will continue to answer the call of community by investing in systems change, advocating for women's rights, and building collective power for women and girls.

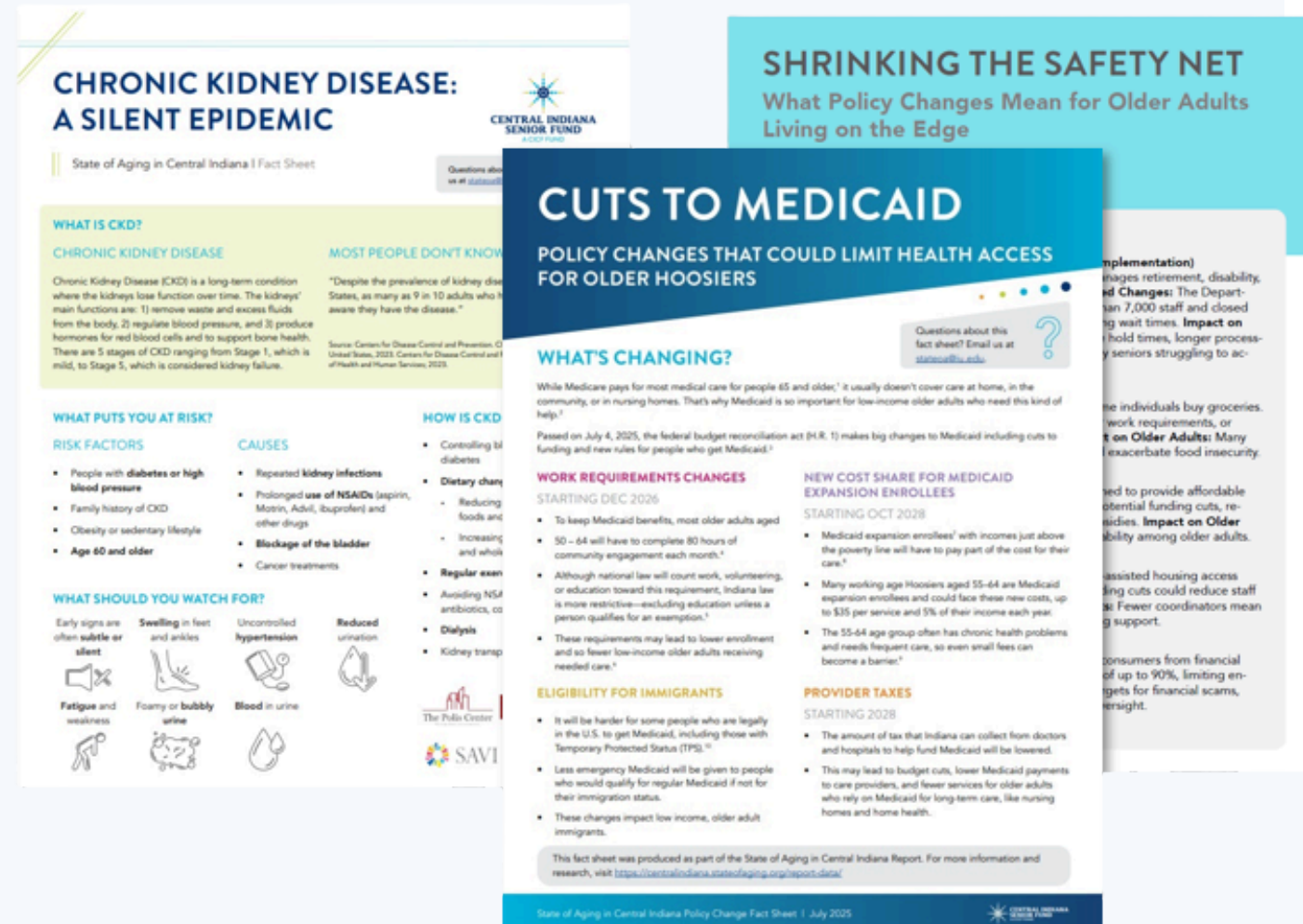


CICF FUND HIGHLIGHT

# Central Indiana Senior Fund

The mission of Central Indiana Senior Fund, a fund of CICF, is to support programs and opportunities for low-to-moderate-income older adults (ages 55 and older) with a focus on under-served or isolated populations.

Since its inception in 2005, Central Indiana Senior Fund has awarded more than \$15 million to approximately 150 senior-serving or senior-focused nonprofits and programs in Central Indiana.



In 2025, Senior Fund supported hosted senior and those caring for them through:

- Two community forums: One on Chronic Kidney Disease and one on the impact of health policy changes on older adults.
- Three research briefs: One on Chronic Kidney Disease, and two to explain the impact of policy changes.
- One webinar: In collaboration with The Polis Center, SAVI, and WFYI about Chronic Kidney Disease.

[View the State of Aging Report](#)

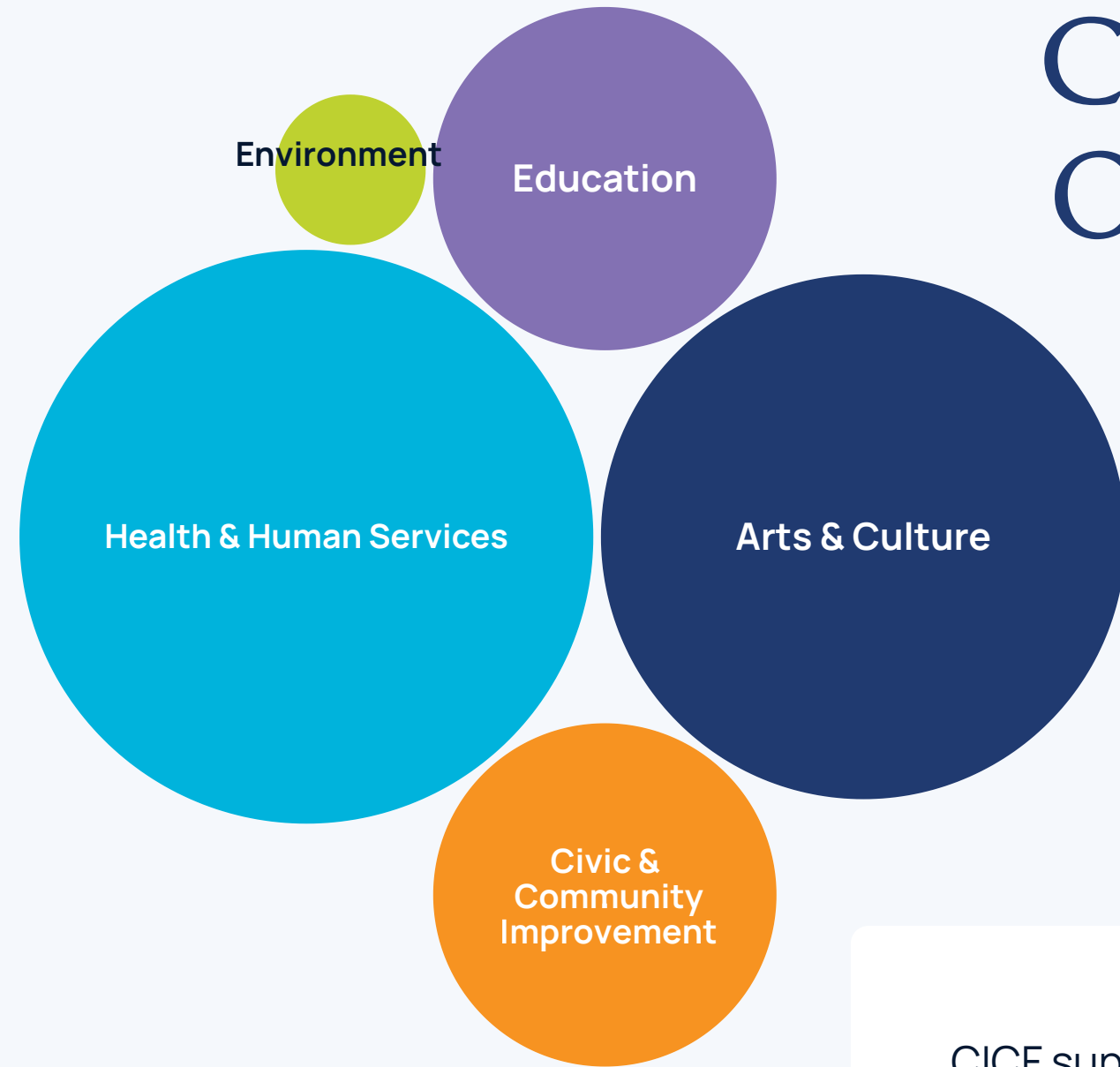
CICF FUND HIGHLIGHT

# IMPACT Central Indiana

IMPACT Central Indiana is an investment partnership created by CICF, Hamilton County Community Foundation, and the Indianapolis Foundation. Its goal is to facilitate social impact investments into community-led development projects, undercapitalized entrepreneurs and small businesses, and affordable/workforce housing developments that generate positive and measurable social impact in the community.

Generations Community Bank is the state's first 'de novo' bank in nearly two decades. A recipient of IMPACT financing in 2025, Generations Bank will open locations on the near north and south sides. The mission is to allow more access for Black and Chin residents underserved by traditional banks.





# Charitable Org Funds

Abri Hochstetler with Greater Indy Habitat for Humanity, a CICF Fundholder, presenting at a Stronger Partners Brighter Futures Program.



**84** orgs held

**305** funds

**\$110.8M** in funds under management

CICF supports charitable organization fundholders at CICF and across the CICF Collaborative, which includes Hamilton County Community Foundation, the Indianapolis Foundation and Women's Fund of Central Indiana. By investing with us, nonprofits have direct access to our team of sustainability professionals and fund management experts. Whether it's guidance on planned giving or non-cash gift administration, nonprofit operations or professional development, or help making meaningful connections across the community, by working with CICF, nonprofits gain a long-term partner committed to helping their endowments grow and missions thrive.

# Nonprofit Programming

## STRONGER PARTNERS, BRIGHTER FUTURES PROGRAM

Stronger Partners, Brighter Futures is CICF's approach to elevating the conversation and activity of planned giving. With the capacity to significantly and positively affect the long-term sustainability of nonprofit organizations, planned giving is all-too-often overlooked at many organizations. The six nonprofits that participated in the 2025-2026 cohort secured \$19 million in commitments.

## EXECUTIVE LEADERSHIP COHORT

CICF launched a cohort for new nonprofit executive leaders with the Lilly Family School of Philanthropy and The Fund Raising School. Sixteen participants with less than three years of experience in an executive leadership role are building skills, confidence, and a peer network.



The 2024-2025 Cohort

SPBF Session Gathered for a Planned Giving Conversation Featuring Tammy Williams, President of Cooke Financial Group, and Clark Collier, CICF's Director of Giving Strategies

Nextech's Catapult Experience



## Supporting Organizations

CICF provides tailored services to the supporting organizations of CICF, Hamilton County Community Foundation, and the Indianapolis Foundation, based on each organization's individual needs. Services include assistance with HR, finance, operations, and philanthropy—which allows each organization to focus on fulfilling its role in the community.

- The District Theatre
- McCaw Family Foundation, Inc.
- Nextech
- IMPACT Central Indiana
- Prosper Investment Fund LLC
- Thomas P. and Sondra D. Sheehan Charitable Foundation
- William E. English Foundation

# The Parks Alliance of Indianapolis

The Parks Alliance of Indianapolis exists to support transformational parks and to inspire the community to action.

Since its creation in 1991, The Parks Alliance has been committed to changing expectations for Indianapolis' parks by focusing resources in strategic areas that strengthen the community and elevate parks and trails and eliminate food insecurity.

In 2025, the Parks Alliance board approved transitioning all operations and assets to a special interest fund at CICF. Parks Alliance continues its work focused on parks and public spaces, while CICF provides deeper support for Parks Alliance's operations and philanthropy, allowing the organization to focus on what it does best while CICF supplies shared expertise that reduces costs and amplifies impact.

CICF staff members at The Parks Alliance of Indianapolis' annual Indy's lunch for Parks.



In December, Jenny Boyts was hired as Parks Alliance's new Executive Director

# Responding to Nonprofit Sector Challenges

In 2025, nonprofit leaders across Central Indiana faced real strain, with tighter budgets, staffing pressure, and growing community need. CICF responded by supporting the nonprofit ecosystem through a variety of measures.

At Old National Bank's 2nd Annual Nonprofit Summit, CICF's Jeff Bennett and Women Fund's Tamara Winfrey Harris shared strategies for resilience such as rethinking revenue, nonprofit collaboration, and supporting beleaguered nonprofit leaders.



## OFFICE HOURS

CICF debuted open office hours, which provided CICF Collaborative staff expertise to the 189 nonprofit professionals who registered. Discussions focused on areas of greatest need expressed by nonprofits, which included financial sustainability, fundraising strategy, and development of new funding streams.

## COLLABORATIVE CONVENING

CICF convened a weekly meeting of team members at CICF, Hamilton County Community Foundation, the Indianapolis Foundation, and Women's Fund of Central Indiana. These enabled staff to stay aligned on what we were hearing from the field, coordinate across entities, and ensure we showed up in the community informed and ready to help.

## COMMUNITY LEADERSHIP

CICF's leadership team showed up across the region to share insights, listen, and help strengthen the sector's resilience. In 2025, CICF staff participated in 20 community presentations, sharing what we were hearing and offering practical expertise. CICF also hosted Leading Through Adaptive Change, creating space for nonprofit professionals to build skills and lead through uncertainty.

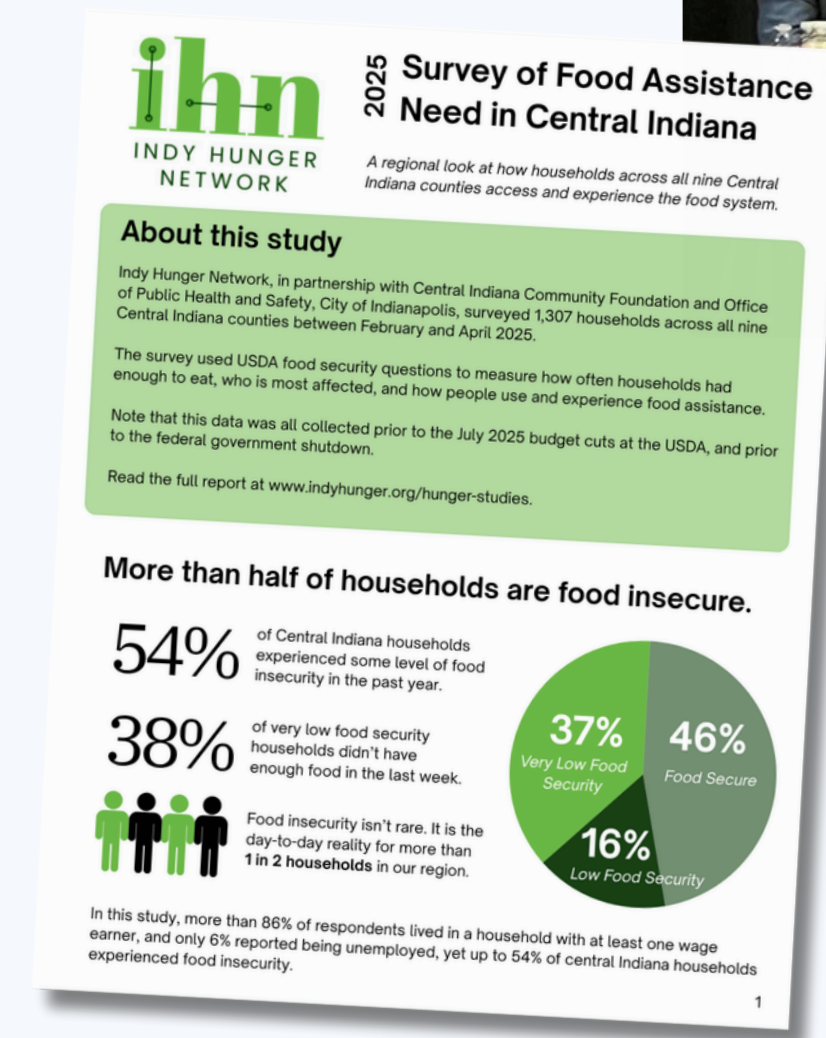
# 2025 Survey of Food Assistance Need

CICF partnered with Indy Hunger Network to release the 2025 Survey of Food Assistance Need in Central Indiana. This report has garnered attention from policymakers and media outlets, including WFYI, WTHR, and Mirror Indy.

CICF convened six of the 10 regional county community foundations and additional stakeholders to discuss the survey's findings and begin conversations around regional solutions. CICF also helped raise funds alongside its partners at Hamilton County Community Foundation, the Indianapolis Foundation, and Women's Fund of Central Indiana to support residents when SNAP benefits were delayed. Over \$1 million was raised within six weeks, including gifts from the Indianapolis Foundation, Hamilton County Community Foundation and fundholders.



M.S.D. of Wayne Township hosted a screening of the documentary "Food, Insecure," followed by a panel discussion. Jeff Bennett, CICF Chief Innovation Officer, served as one of the panelists.



# Collaborative Partners

CICF provided operational and philanthropic support to its collaborative partners, including Hamilton County Community Foundation, the Indianapolis Foundation, Women’s Fund of Central Indiana, and additional supporting organizations. CICF helped them manage the following asset amounts.

**\$644,726,472**



**\$146,766,032**



**\$534,782,307**



**\$17,946,746**



**\$56,714,191**

**SUPPORTING  
ORGANIZATIONS**

Amounts for CICF, HCCF, and IF exclude assets held by associated supporting organizations

# Connected Communities

CICF administered the final year of the Connected Communities Initiative funded by the Lilly Endowment. CICF, the City of Indianapolis, and other partners turned catalytic funding into a regional trail network. The initial \$50 million investment created a pipeline that now exceeds \$200 million in projects that are either completed or underway. Major milestones include the October 8 celebration of the completion of 17 continuous miles of trail on the west side by closing a gap on the B&O Trail as well as the October 21 opening of the Indianapolis segment of the Nickel Plate Trail. The Nickel Plate project cost \$14.9 million and connects the State Fairgrounds, Fall Creek Trail, Monon Trail, Castleton, and Hamilton County. In the last ten years, Marion County has doubled its number of trail miles.



Ribbon cutting of the Indianapolis portion of the Nickel Plate Trail.

# BY Plus: Good People, Good Jobs, Good Careers

To capitalize on the increasing number of rewarding career opportunities in the growing construction industry, CICF partners with Indiana Construction Roundtable Foundation, Home Repairs for Good, and the Indianapolis Legal Aid Society on a collaborative and creative approach to support the construction training and development of underinvested, low income, under represented and under employed individuals within Indianapolis. This program is called BY-Plus.

In 2025, trainees through the Paid Work Experience program completed work on a major house remediation project on Sutherland Avenue in Indianapolis. It was almost a total rebuild, and provided an excellent opportunity for trainees to work on a wide variety of repair issues. This work represents the life-changing home transformation at the heart of the BY-Plus program's comprehensive focus: training individuals, addressing barriers to a better life, investing in neighborhoods, helping residents age in place, and improving quality of life across our community.



# People & Potential

CICF is honored to support nonprofit professionals, our own team, and community leaders—because strong people build strong communities. In 2025, CICF advanced the People & Potential pathway of its strategic plan by investing in its team through more equitable compensation, clearer performance practices, and stronger mental health support.

## **COMPENSATION FRAMEWORK**

CICF advanced a transparent, equitable compensation framework across our foundation partners. This work strengthened consistency across roles and entities and reinforced our commitment to fairness and clarity for staff.

## **PERFORMANCE MANAGEMENT**

We rolled out a shared performance management tool, standardizing goal-setting and annual reviews across our foundation partners. This created a clearer, more consistent approach to expectations, feedback, and growth.

## **MENTAL HEALTH SUPPORT**

To support employee well-being, CICF offered a new program allowing staff to access therapy at no cost to them.



Staff at CICF and our foundation partners at a summer outing to cheer on the Indianapolis Indians

# Thank You

Thank you to our **fundholders** for your generosity and commitment to making Central Indiana stronger.

Thank you to our **foundation partners** for your continued partnership and shared vision.

To our **community partners**—thank you for walking alongside us to drive meaningful impact.

And to the **dedicated staff of CICF and the staff of our foundation partners**, thank you for your tireless work to create a thriving region for all.



**Central Indiana  
Community Foundation**

